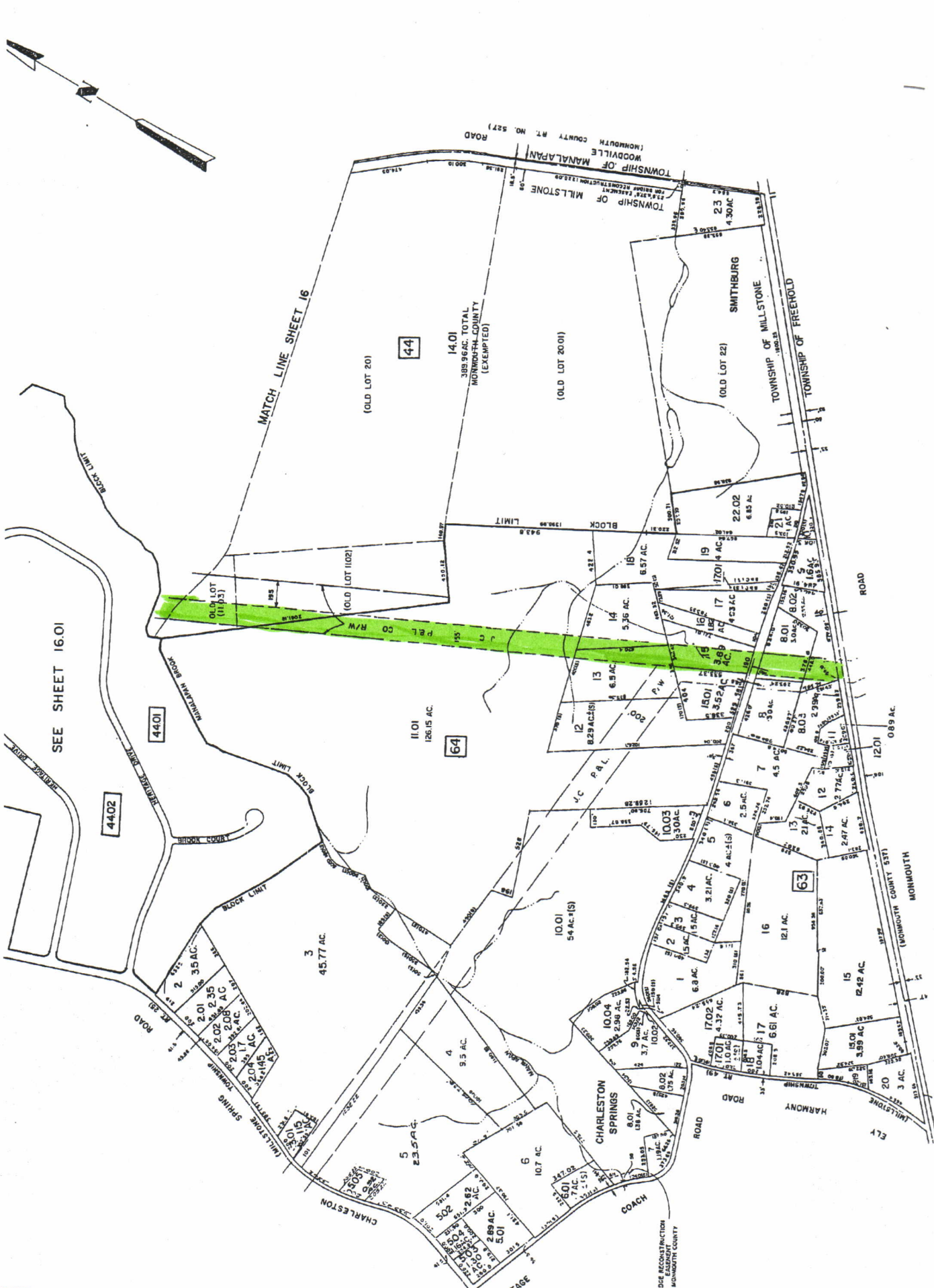


8	18
9	19
10	20
11	21
12	22
13	23
14	24
15	25



TAX
TOWNSHIP OF
MONMOUTH COUNTY
 SCALE 1" = 400'

NEW JERSEY DEPARTMENT OF THE TREASURY
 DIVISION OF TAXATION
 ENGINEERING & RAILROAD TAX BUREAU
 APPROVED AS A TAX MAP PURSUANT TO THE

THE COUNTY ENGINEER OF THE TOWNSHIP
 OF MONMOUTH COUNTY
 APPROVED AS A TAX MAP PURSUANT TO THE
 ENGINEERING & RAILROAD TAX BUREAU
 APPROVED AS A TAX MAP PURSUANT TO THE

SEE SHEET 16.01

MATCH LINE SHEET 16

44.01

64

63

63

64

65

66

67

68

69

70

71

72

73

74

75

76

77

78

79

80

81

82

83

84

85

86

87

88

89

90

91

92

93

94

95

96

97

98

99

100

101

102

103

104

105

106

107

108

109

110

111

112

113

114

115

116

117

118

119

120

121

122

123

124

125

126

127

128

129

130

131

132

133

134

135

136

137

138

139

140

141

142

143

144

145

146

147

148

149

150

151

152

153

154

155

156

157

158

159

160

161

162

163

164

165

166

167

168

169

170

171

172

173

174

175

176

177

178

179

180

181

182

183

184

185

186

187

188

189

190

191

192

193

194

195



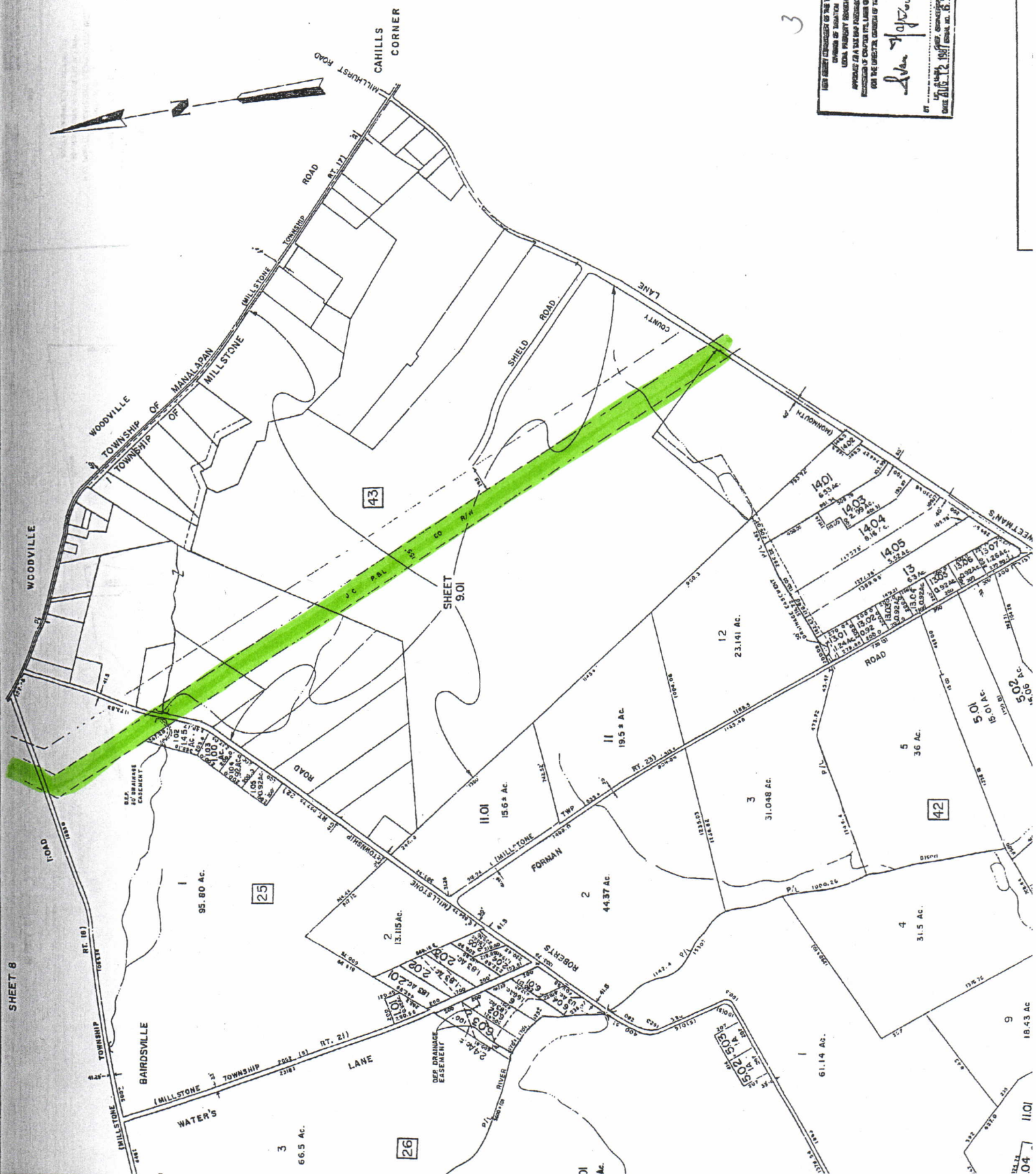
THIS SHEET IS A PART OF THE TOWNSHIP
 DIVISION OF WASHINGTON
 COUNTY PLATING RECORD
 APPROVED FOR A TAX MAP PURSUANT TO THE
 PROVISIONS OF CHAPTER 17A, LAWS OF 1941, BY
 THE SUPERVISOR OF THE COUNTY OF WASHINGTON

John H. [Signature]

BY _____ COUNTY ENGINEER
 DATE AUG. 12, 1941

PLAT NO. 1675

3





TAX MAP
TOWNSHIP OF MILLSTONE
MONMOUTH COUNTY, NEW JERSEY
 SCALE 1" = 400' JAN. 1961

PREPARED BY
VAN NOTE-HARVEY ASSOCIATES
 234 MASSAU STREET-PARLIN, NEW JERSEY
 IN ASSOCIATION WITH
AMERICAN AIR SURVEYS, INC.
 907 PEKIN AVENUE-PITTSBURGH, PA.

57

LEGEND
 1 - BLOCK NUMBER
 2 - PARCEL NUMBER
 3 - PARCEL NAME
 151 - SCALED DIMENSION IN FEET
 152 - SCALED DIMENSION IN ACRES
 153 - DIMENSION UNIT NUMBER
 NOTE: TO SHOW CONDITIONS AS OF JANUARY 1, 1962

NEW JERSEY DEPARTMENT OF THE TREASURY
 DIVISION OF TAXATION
 ENGINEERING & SURVEYING BUREAU
 APPROVED AS A TAX MAP PURSUANT TO THE
 PROVISIONS OF CHAPTER 178, LAWS OF 1957
 FOR THE DIRECTOR, DIVISION OF TAXATION
 BY: *[Signature]*
 DATE: OCT 30 1961 SERIAL NO. 3333

NEW JERSEY DEPARTMENT OF THE TREASURY
 DIVISION OF TAXATION
 LOCAL PROPERTY TAXES
 APPROVED AS A TAX MAP PURSUANT TO THE
 PROVISIONS OF CHAPTER 178, LAWS OF 1957
 FOR THE DIRECTOR, DIVISION OF TAXATION
 BY: *[Signature]*
 DATE: AUG 12 1961 SERIAL NO. 3333

SHEET 9